

ZEX.0202-a

ZEX central electrics

CHARACTERISTICS

- Suitable for 12 V and 24 V applications
- 2 isolated separate circuits, therefore a mixed application of 12 V and 24 V possible
- Power supply via M5 power socket up to max. 70 A
- Outputs via power socket
- 2 sockets for Maxi fuse(s)
- 2 Maxi relay sockets 4-pin
- Rear connector 6-pin, 3 rows – JPT and MCP compatible
- Also available with populated board (relays, fuses, suppressor diodes)

TECHNICAL DATA

- 8 Operational temperature: -40 °C to +85 °C
- Max. power supply: Max. 2 x 70 A at 30 °C ambient temperature; max. 2 x 50 A at 60 °C ambient temperature
- Input: Power element socket M5, max. torque: 2.2 Nm (other designs on request)
- Output: Connector 3 rows, 6-pin, JPT/MCP compatible
- Recommended cable cross-section for connector:
Current ≤ 15 A: 7.5 A per mm²
Current > 15 A: 5 A per mm²

APPLICATIONS

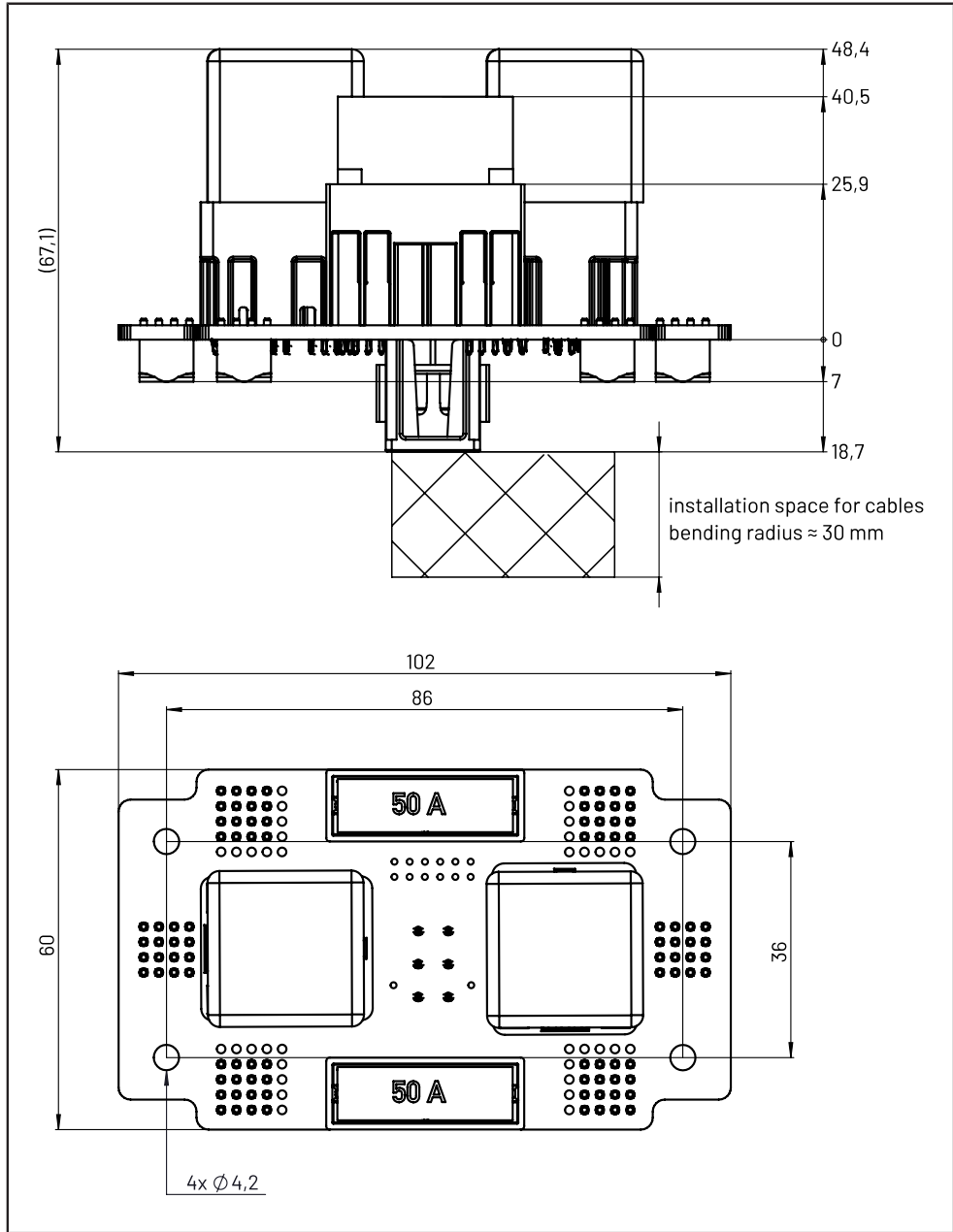
- Power distribution (for typical functionalities) in the automotive sector, such as alternators, control and display devices, radio, accessories etc.
- Can be used individually or modularly

Sensor-Technik Wiedemann GmbH

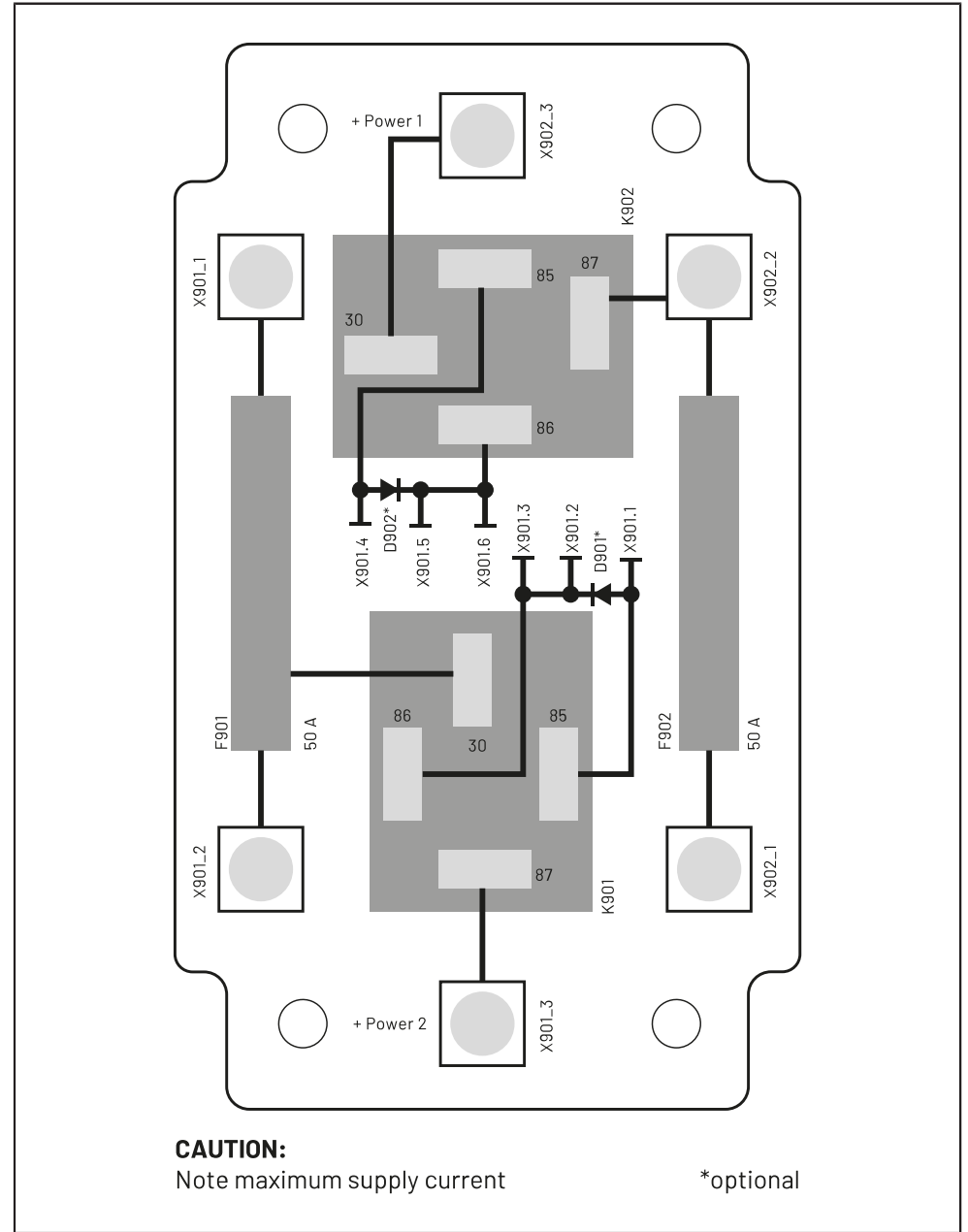
Am Bärenwald 6
87600 Kaufbeuren
+49 8341 9505-0

info.stw@wiedemann-group.com
www.stw-mm.com

TECHNICAL DRAWING



ELECTRIC CIRCUIT DIAGRAM



CAUTION: Note maximum supply current *optional